

# THE DOCK

TYPE OWNERS HOME

SQUARE FOOTAGE 3188

BEDROOMS 4

BATHROOMS 3.5

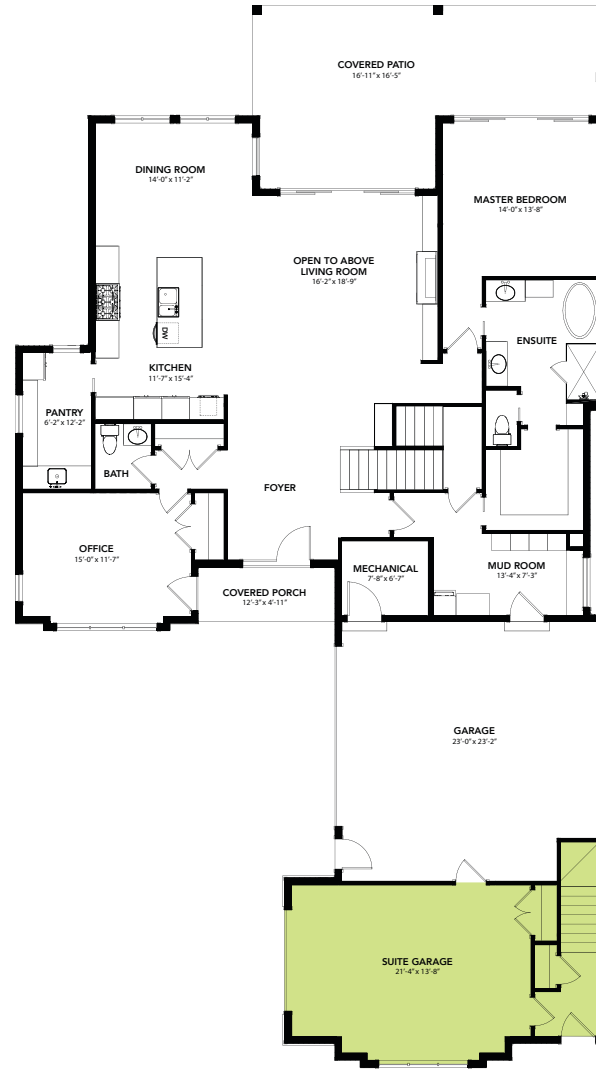
TYPE INCOME SUITE

SQUARE FOOTAGE 907

BEDROOMS 2

BATHROOM 1

MAIN FLOOR 1983 SQ FT



SECOND FLOOR  
OWNERS HOME 1205 SQ FT  
SUITE AREA 907 SQ FT



**LIVEATCARRINGTON.CA**