

THE SILVA F

TYPE OWNERS HOME

SQUARE FOOTAGE 3524

BEDROOMS 5

BATHROOMS 4

[LIVEATCARRINGTON.CA](https://liveatcarrington.ca)

© 2025 Carrington Homes LTD. We reserve the right to make changes and modifications to the floor plans, elevations, material specification and features without notice. Dimensions may vary from actual blueprints. E & O.E.



THE SILVA F

TYPE **OWNERS HOME**

SQUARE FOOTAGE **3524**

BEDROOMS **5**

BATHROOMS **4**

OPTIONS

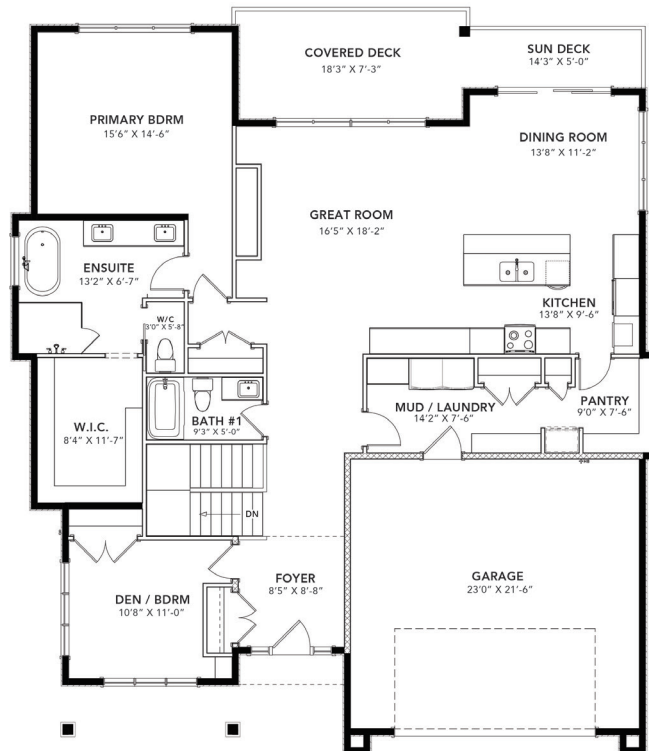
■ INCOME SUITE

Total home square footage with
Income Suite option is 3427 SQ FT

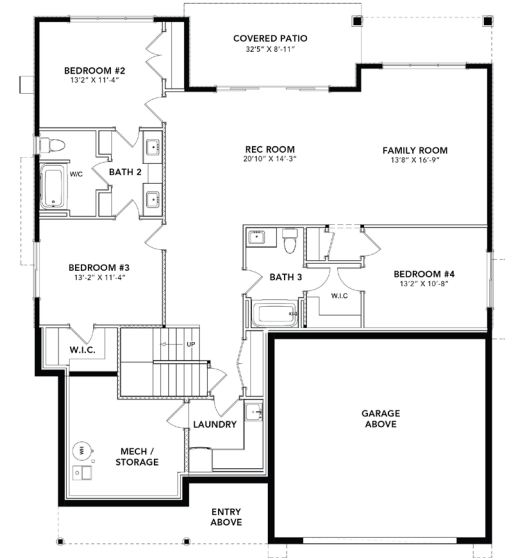
LIVEATCARRINGTON.CA

© 2025 Carrington Homes LTD. We reserve the right to make changes and modifications to the floor plans, elevations, material specification and features without notice. Dimensions may vary from actual blueprints. E & O.E.

MAIN FLOOR 1914 SQ FT



BASEMENT 1610 SQ FT



BASEMENT WITH INCOME SUITE
1513 SQ FT FOR OWNER'S HOME

