

# Evans T

TLH 176 - Lot 32

in Trailhead at the Ponds



2,339 SQ FT



3 BEDS



2.5 BATHS



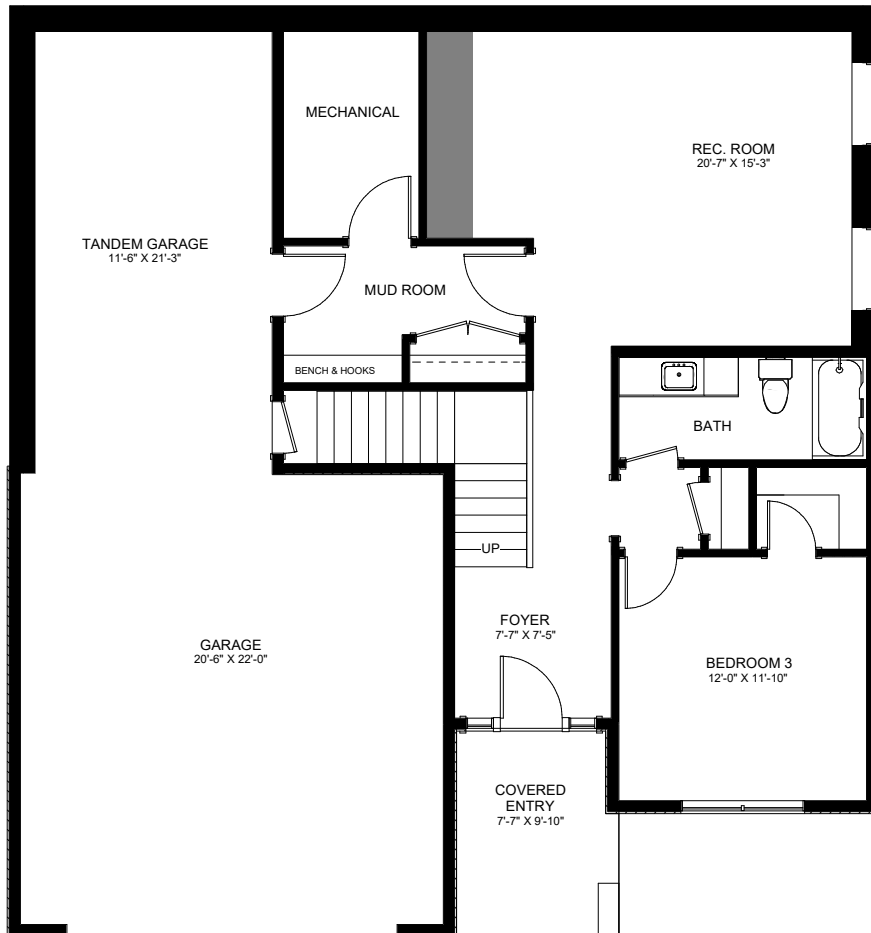
**CARRINGTON**  
HOMES

# Floorplan



- Triple car garage
- Main floor bedroom with full bathroom
- Glass panel railing on the staircase
- L-shaped kitchen with pass through window to the outdoor patio, along with a large island, and stainless steel appliances
- Gas fireplace with full tile surround and storage cabinetry on either side
- 9' Floating vanity in the ensuite with a walk-in shower with two body sprays and hand wand

## GROUND FLOOR: 869 SQFT

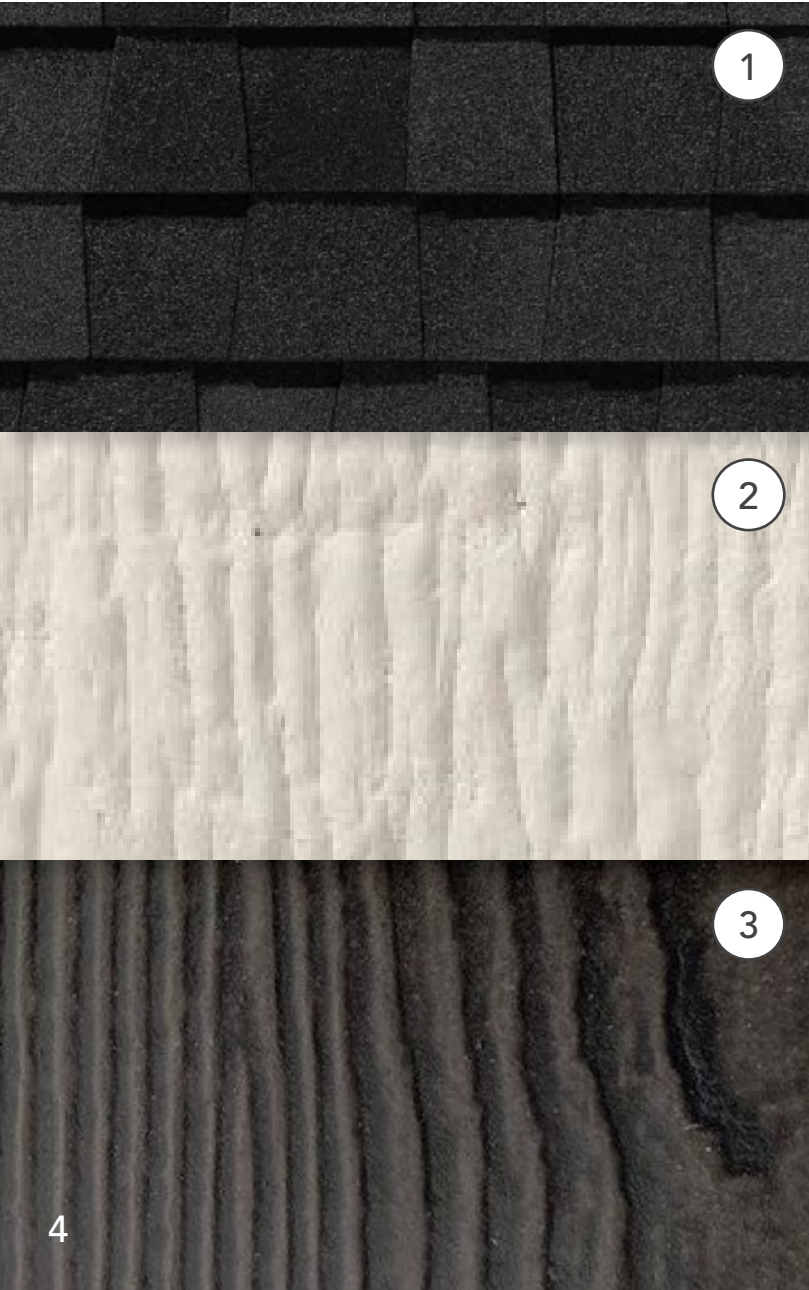


## MAIN FLOOR: 1470 SQFT



# Exterior Highlights

---



① **Roof** // Black

② **Siding** // Desert Stone

③ **True Grain** // Night Rider

**Stone** // Limestone

**Soffit & Fascia** // Black

**Garage Door** // Black/Opaque

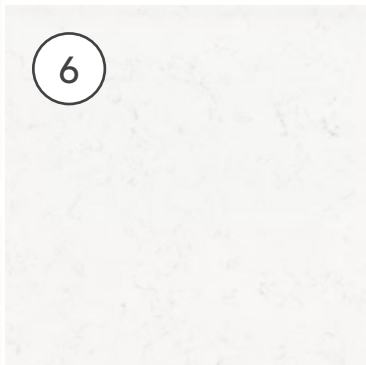
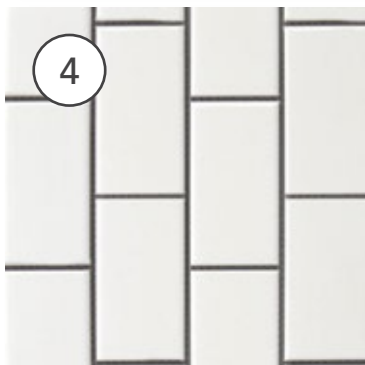
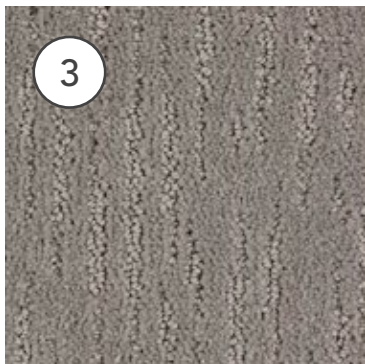
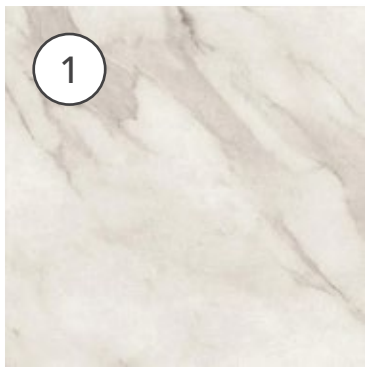
**Windows Exterior** // Black PVC



# Interior Highlights

---

- 1 Tile Flooring
- 2 Vinyl Flooring
- 3 Carpet // Grey
- 4 Shower Tile Surround & Ensuite Fully-tiled Shower Walls // 4x16 White Gloss Vertical Staggered Matching Grout
- 5 Kitchen & Hall Bath Countertop // White
- 6 Ensuite & Main Bath Countertop
- 7 Backsplash
- 8 Faucets // Black
- 9 Sink // Black Double Bowl
- 10 Cabinetry & Hardware



# Interior Highlights

---

- ⑩ **Interior Doors & Hardware**
- ⑪ **Fireplace** // Linear Napoleon BL46 gas
- ⑫ **Lighting** // a) Stairs/Open to Below  
b) Dining  
c) Exterior

# Inclusions

---

## **Kitchen Cabinetry Pull-outs**

- Garbage Bin Pull-out

## **Brilliant Smart Home Automation**

10



12a



12b



12c



11



**LIVEATCARRINGTON.CA**

© 2022 Carrington Homes LTD. We reserve the right to make changes and modifications to the floor plans, elevations, material specification and features without notice.  
Dimensions may vary from actual blueprints. E & O.E.